

YAESU

YCE01

PC PROGRAMMING SOFTWARE

REFERENCE MANUAL

(for Software Version: 2.0.0.6 or later)

This software is used to program the FTA-750/FTA-550/FTA-450 air band transceiver. With this software, you can quickly and easily program the FTA-750/FTA-550/FTA-450 operating channels from your personal computer.

Note: For transceiver software version “2.xx” or later.

CONTENTS

Before Using	3	Main Menu	16
Trademark Information.....	3	“File”	16
Installation and Removal of the Program	3	“Edit”	17
To install the YCE01	3	“Transfer”	17
To remove the YCE01 from your computer ...	3	“Region”	19
Startup of the Program.....	4	“Option”	19
To close the YCE01	4		
Model Setup.....	4		
To select the model.....	4		
To select the target region.....	4		
Main Screen	5		
“Setup” Category	5		
“Configuration”	5		
“COMM Setup”	7		
“GPS Setup” (FTA-750 Only).....	10		
“Memory Book” Category	12		
Adding a New Entry.....	12		
Editing a Memory Book Entry	12		
Deleting a Memory Book Entry	14		
“Memory Group Name” Category	14		
“Weather Channels” Category	15		

Important Notice: You assume full responsibility for the use of the YCE01.

The company and product names in this manual are trademarks and/or registered trademarks of their respective companies.

BEFORE USING

Minimum System Requirements

- ☐ Windows® PC
- ☐ Windows 7®, Windows 8® or Windows 10® operating system
- ☐ Up to 20 Megabytes of free hard disk drive space
- ☐ Mouse or other pointing device
- ☐ 256-color display adapter (24-bit color recommended) and monitor with 640 * 480 resolution or higher
- ☐ NET Framework 3.5 or 4.0

This reference manual was created using the **Windows 7** operating system. Operations and screen examples may vary based on your operating system.

Trademark Information

Microsoft®, Windows®, Windows® 7, Windows® 8, and Windows® 10 are registered trademarks of Microsoft Corporation in the United States and other countries.

INSTALLATION AND REMOVAL OF THE PROGRAM

To install the YCE01

1. Download the **YCE01** PC Programming Software from the YAESU website and decompress the files to anywhere on your computer. Note that all the files must remain in the same folder.
2. Run the “YCE01_Vxxx_setup.exe” in the same folder that you have decompressed the files.
3. Follow the instructions on your computer screen.
If the YCE01 is successfully installed, a shortcut icon “YCE01” will appear on the desktop of your computer. The instruction screen for installing the FTA-750/FTA-550/FTA-450 device driver will also appear.
4. Follow the instructions on your computer screen.
The device driver will be installed.

To remove the YCE01 from your computer

1. Click the Start button and then “**Control Panel**”.
2. Click “**Programs**” and then “**Uninstall Programs**”.
3. Right-click “**YCE01**” and then click the menu item “**Uninstall**”.

STARTUP OF THE PROGRAM

Double-click the “YCE01” icon on the desktop of your computer, or click “YCE01” in the Start menu displayed by clicking the Start button.

To close the YCE01

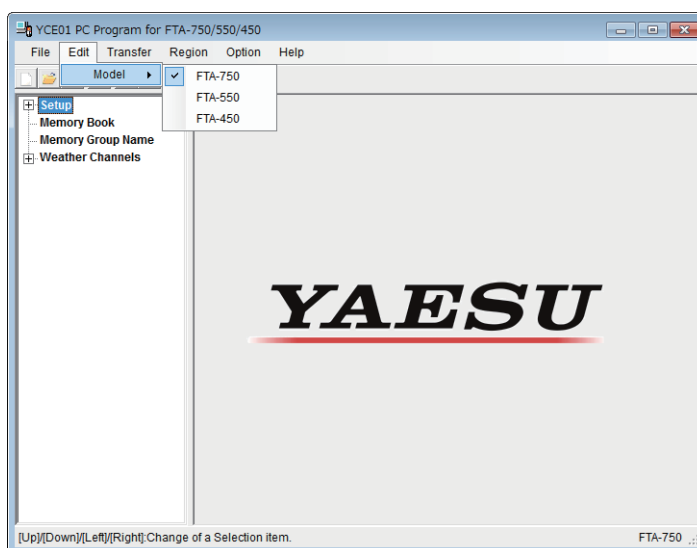
Click the [X] button in the top right corner of the YCE01 window, or click “Exit” in the “File” menu of the YCE01.

MODEL SETUP

Items and values available on the YCE01 depend on the model of the radio and the region of the world to be used.

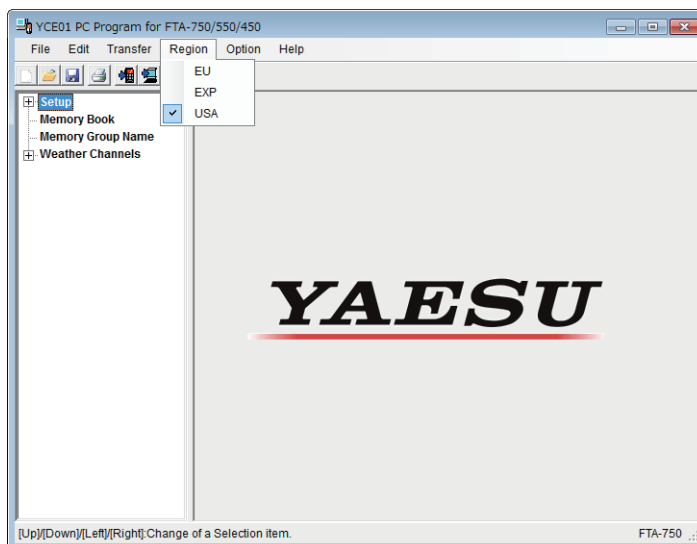
To select the model

1. Click “Edit” on the menu bar.
2. Select either of “FTA-750”, “FTA-550” and “FTA-450” under the item “Model”.



To select the target region

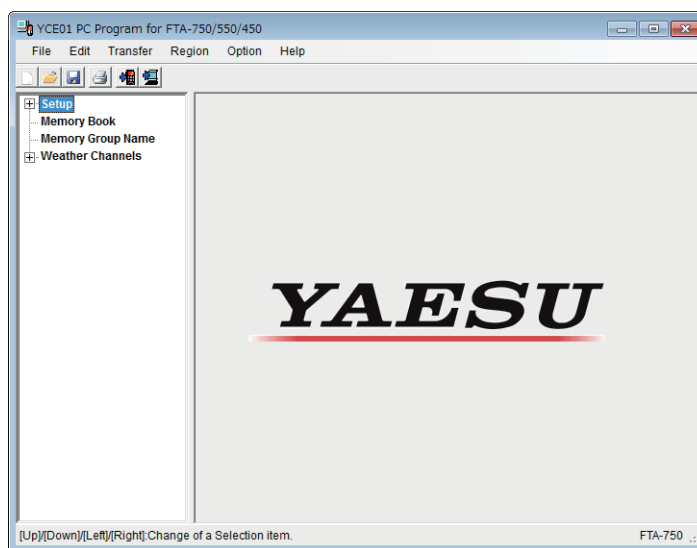
1. Click “Region” on the menu bar.
2. Select either of the following items.
 - EU:** For use in Western Europe and other EU countries
 - EXP:** For use in the regions other than those covered by the items EU and USA
 - USA:** For use in North America, Central America, and South America



MAIN SCREEN

The YCE01 main screen consists of two major sections: the **System Tree View** (left pane) and the list of detailed settings or entries of each category (right pane).

The **System Tree View** includes four categories: “**Setup**”, “**Memory Book**”, “**Memory Group Name**”, and “**Weather Channels**”.

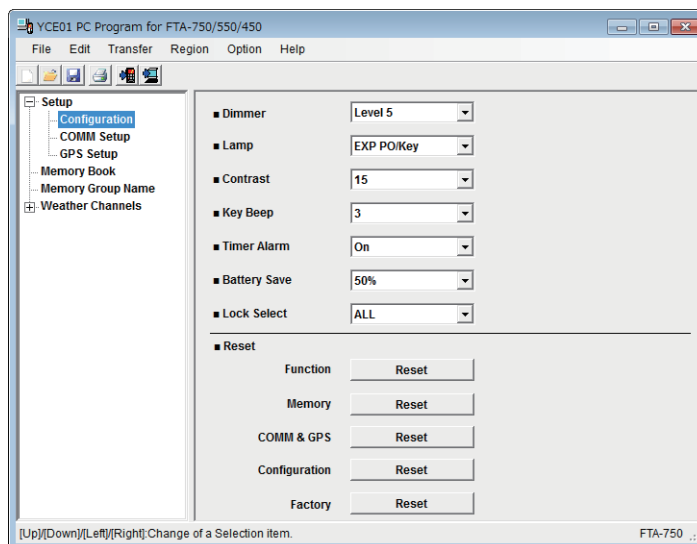


“Setup” Category

Double-click the “**Setup**” category to display the setup list (“**Configuration**”, “**COMM Setup**”, and “**GPS Setup**”), then click the desired item to display its contents.

“Configuration”

This item includes the parameters set in the CONFIGURATION menu of the SETUP mode on the FTA-750/FTA-550/FTA-450 transceivers.



Dimmer:

This parameter selects the brightness of the LCD display. Available values are “**Level 1**”, “**Level 2**”, “**Level 3**”, “**Level 4**”, “**Level 5**” (brightest), and “**Off**”.

Lamp:

This parameter sets the backlight operation of the LCD display and keypad. Available selections are:

Off: Sets the backlight for the LCD and keypad to OFF.

Continuous: Sets the backlight for the LCD and keypad to continuously ON.

5sec / 10sec / 30sec / 60sec / 120sec / 300sec:

Sets the backlight for the LCD and keypad to illuminate for the selected time when any key is pressed.

MAIN SCREEN

EXP PO / Key: Sets the backlight for the LCD and keypad to illuminate for 5 seconds when any key is pressed, or to illuminate continuously when connected to an external DC power source.

Contrast:

This parameter selects the sharpness of the LCD display from “**1**” to “**30**” levels.

Key Beep:

This parameter selects the loudness of the beeps heard when a key is pressed. Available values are “**1**” to “**5**” (loudest) and “**Off**”.

Timer Alarm:

This parameter toggles the alarm feature of the timer “**On**” or “**Off**”.

Battery Save:

This parameter sets the operation of the battery saver.

Available selections are:

Off: Sets the battery saver to OFF.

50%: Sets the battery saver to allow reception for 100 ms after 100 ms of no operation.

70%: Sets the battery saver to allow reception for 100 ms after 250 ms of no operation.

80%: Sets the battery saver to allow reception for 100 ms after 450 ms of no operation.

90%: Sets the battery saver to allow reception for 100 ms after 900 ms of no operation.

Lock Select:

This parameter selects the controls to be locked when the LOCK key is pressed. Available values are “**Key Lock**”, “**Dial Lock**”, and “**ALL**”.

Reset:

Settings or data can be cleared by category. When “**Factory**” is selected, all the settings and data will be reset to factory default.

Click the [**Reset**] button of the desired category to initialize settings or to erase data.

○ If you start a reset before connecting a radio to your computer, settings you have entered on the **YCE01** will be cleared.

○ If you start a reset after connecting a radio to your computer, the radio’s settings and data will be cleared.

Note: See Page 18 for details about the connection between the radio and your computer.

MAIN SCREEN

“COMM Setup”

This item includes the parameters mainly set in the COMM SETUP menu of the SETUP mode on the FTA-750/FTA-550/FTA-450 transceivers.

Usable Frequency Band:

These parameters determine which of the possible channel groups shall be “Used (☒)” or “Not Used (☐)” for the radio.

COMM Band: Enables or disables the reception and transmission

on the NAV band (108.000 through 117.975 MHz) and the COM band (118.000 through 136.975 MHz).

COMM Band (8.33 kHz): Enables or disables the adjustment of the operation frequency by 8.33 kHz step on the COM band.

Weather CH Band: Enables or disables the reception of the ten weather channels.

Weather CH Band (Weather Alert): Toggles the reception of the weather alert signals “On” or “Off” when the “Weather CH Band” parameter is set to “Used (☒)”.

Emergency Call:

This parameter toggles the quick access feature to the emergency frequency (121.500 MHz) with the [121.5] key of the radio “On” or “Off”.

Auto Noise Limiter (ANL):

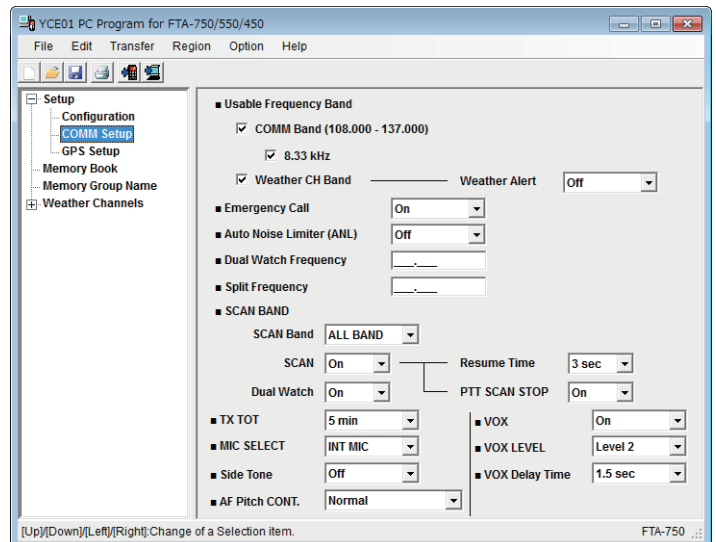
This parameter toggles the automatic noise reduction feature “On” or “Off”.

Dual Watch Frequency [MHz]:

This parameter sets a channel to be used during the dual watch operation.

Split Frequency [MHz]:

This parameter sets the transmission channel to be used during the NAV band operation.



MAIN SCREEN

SCAN BAND (SCAN BAND):

Select the band to be scanned.

“**ALL BAND**” scans both the COM and NAV bands between 108.000MHz and 136.975MHz.

“**COM BAND**” scans the COM band between 118.000MHz and 136.975MHz.

“**NAV BAND**” scans the NAV band between 108.000MHz and 117.975MHz.

SCAN BAND (SCAN):

This parameter toggles the scan feature “**On**” or “**Off**.”

SCAN BAND (Resume Time):

This parameter selects the scan resume time. Available values are “**0 sec**”, “**1 sec**”, “**2 sec**”, “**3 sec**”, and “**5 sec**”.

When this parameter is set to “**1 sec**”, “**2 sec**”, “**3 sec**”, or “**5 sec**”, the scanner will hold for the selected period (seconds), then resume whether or not the other station is still transmitting. When this parameter is set to “**Off**”, the scanner will stop when a signal is received, and will not restart.

SCAN BAND (PTT SCAN STOP):

This parameter defines whether the scan function shall be aborted (“**On**”) or not aborted (“**Off**”) when the PTT switch is pressed while scanning is engaged.

SCAN BAND (Dual Watch):

This parameter toggles the dual watch feature “**On**” or “**Off**”.

TX TOT:

This parameter selects the time-out time of the transmission. Available values are “**1 min**”, “**2 min**”, “**3 min**”, “**4 min**”, “**5 min**”, and “**Off**”.

When this parameter is set to “**1 min**”, “**2 min**”, “**3 min**”, “**4 min**”, or “**5 min**”, the radio will shut off the transmission after it continues for the selected period (minutes). When this parameter is set to “**Off**”, the transmission will not be shut off.

MIC SELECT:

This parameter toggles the operation of the internal microphone “**INT MIC**” or “**EXT MIC**”.

When this parameter is set to “**EXT MIC**”, the radio’s PTT switch controls the external microphone on a headset, etc.

MAIN SCREEN

Side Tone:

This parameter selects the side tone level when an external headset is connected to the radio. Available values are “**MIN**”, “**Level 1**”, “**Level 2**”, “**MAX**”, and “**Off**”.

AF Pitch CONT.:

This parameter selects the operation of the audio filter.

Available selections are:

Normal: Sets the audio filter to OFF.

LOW CUT: Sets the audio filter to cut off the lower range of sound.

HIGH CUT: Sets the audio filter to cut off the higher range of sound.

HIGH AND LOW CUT: Sets the audio filter to cut off the higher and lower range of sound.

VOX:

This parameter toggles the VOX feature “**On**” or “**Off**” when an external headset is connected to the radio.

VOX LEVEL:

This parameter is inactive until the parameter **VOX** is set to “**On**”.

This parameter selects the sensitivity of the VOX system. Available values are “**MIN**”, “**Level 1**”, “**Level 2**”, “**Level 3**”, and “**MAX**”.

VOX Delay Time:

This parameter is inactive until the parameter **VOX** is set to “**On**”.

This parameter selects the delay time of the VOX system. Available values are “**0.5 sec**”, “**1.0 sec**”, “**1.5 sec**”, “**2.0 sec**”, and “**3.0 sec**”.

MAIN SCREEN

“GPS Setup” (FTA-750 Only)

This item includes the parameters mainly set in the GPS SETUP menu of the SETUP mode on the FTA-750 transceiver.

This appears only when the FTA-750 is selected in the “**Edit**” menu of the YCE01.

Unit Power:

This parameter toggles the internal GPS unit “**On**” or “**Off**”.

Power Save:

This parameter sets the operation of the GPS unit.

Available selections are:

Off: Sets the GPS unit to operate all the time.

AUTO: Sets the GPS unit to operate only when a GPS signal is received or the radio enters the GPS or NAVI mode.

50%: Sets the GPS unit to operate 3 sec after 3 sec of no operation.

75%: Sets the GPS unit to operate 3 sec after 9 sec of no operation.

90%: Sets the GPS unit to operate 3 sec after 27 sec of no operation.

Location Format:

This parameter selects the notation of position information. Available values are “**ddd°mm’ss**” (degrees, minutes, seconds)”, “**ddd°mm.mm** (degrees, minutes, hundredths of a minute)”, and “**ddd°mm.mmm** (degrees, minutes, thousandths of a minute)”.

Pinning:

This parameter toggles the position information update feature “**On**” or “**Off**”.

Time Setup (Display):

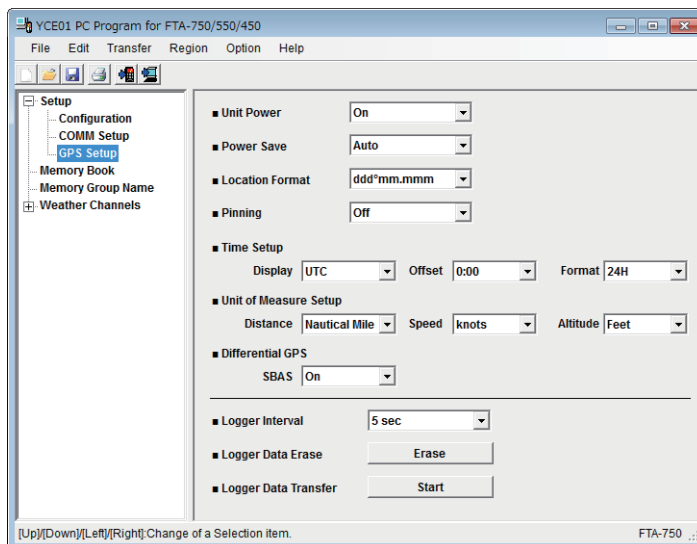
This parameter sets the time to be shown in local time (“**Local**”) or UTC time (“**UTC**”).

Time Setup (Offset):

This parameter sets the time offset for your local time from the UTC time.

Time Setup (Format):

This parameter sets the radio to be shown in 12-hour (“**12H**”) or 24-hour (“**24H**”) format.



MAIN SCREEN

Unit of Measure Setup (Distance):

This parameter selects the unit of measurement for distance between the target point and your position. Available values are “**Nautical Mile**”, “**Statute Mile**”, and “**Kilometer**”.

Unit of Measure Setup (Speed):

This parameter selects the unit of measurement for SOG (speed over ground). Available values are “**knots**”, “**mph** (miles per hour)”, and “**km/h** (kilometers per hour)”.

Unit of Measure Setup (Altitude):

This parameter selects the unit of measurement for your altitude. Available values are “**Feet**” and “**Meters**”.

Differential GPS (SBAS):

This parameter toggles the SBAS (satellite-based augmentation system) feature “**On**” or “**Off**”.

Logger Interval:

This parameter selects the interval time of logging. Available values are “**1 sec**”, “**3 sec**”, “**5 sec**”, “**10 sec**”, and “**30 sec**”.

Logger Data Erase:

The log data recorded in the memory of the radio can be cleared to free memory for future recordings.

Click the [**Erase**] button to erase the log data after connecting the radio to your computer.

Note: See Page 18 for details about the connection between the radio and your computer.

Logger Data Transfer:

The log data recorded in the memory of the radio can be retrieved to use for mapping, analysis, or other purpose.

Click the [**Start**] button to copy the log data after connecting the radio to your computer.

Notes:

- See Page 18 for details about the connection between the radio and your computer.
- You may choose the file format of the log data from the NMEA and KML on the “Save As” window displayed after clicking the [**Start**] button. See the reference manual of your application utilizing the log data to determine the file format.

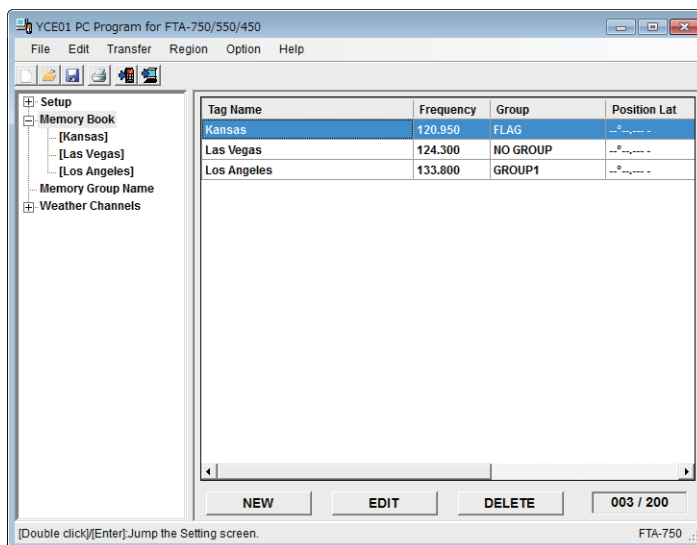
MAIN SCREEN

“Memory Book” Category

Double-click the “**Memory Book**” category to display the list of items (entries of channel or destination), then click the desired item to display its detailed information.

Adding a New Entry

1. Click the “**Memory Book**” category to display the list of entries on the right pane.
2. Click the [**NEW**] button at the bottom of the screen.
3. Set the desired items, referring to the descriptions in the next section.
4. Click the [**SAVE**] button at the bottom of the screen.



Editing a Memory Book Entry

You may also display the detailed information of an entry by selecting it from the list in the right pane then clicking the [**EDIT**] button at the bottom of the screen.

After you set the desired items, click the [**SAVE**] button at the bottom of the screen.

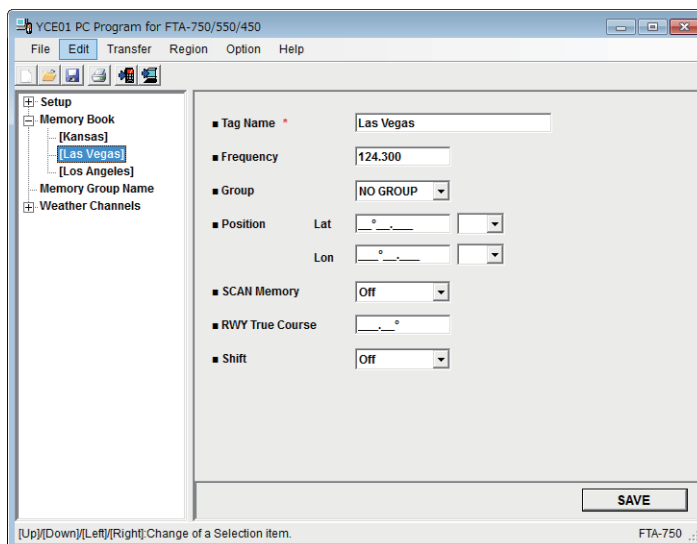
Tag Name:

This parameter allows you to assign an alphanumeric name to the entry for easy identification and search.

Up to 15 characters are available.

Available characters are 0 to 9, A to Z, a to z, plus (+), hyphen (-), comma (,), slash (/), left bracket ([), right bracket (]), period (.), asterisk (*), ampersand (&), and space.

Note: This parameter cannot be left blank.



MAIN SCREEN

Frequency [MHz]:

This parameter sets the channel frequency of the entry.

The FTA-750/FTA-550/FTA-450 are set up with default channel steps of 25 kHz (NAV and COM bands). If you need to change the channel step increments, set the **8.33 kHz** check box to “ON (☒)” under the **Usable Frequency Band** item in the “**COMM Setup**” category.

Notes:

- Converted values according to the table on the right must be input when using frequencies by 8.33 kHz step.
- Frequencies by 8.33 kHz step are available only on the COM band (118.000 through 136.975 MHz).

Operating Frequency (8.33 kHz Step)	Input Value [MHz]
1**.0000 MHz	1**.005
1**.0083 MHz	1**.010
1**.0166 MHz	1**.015
1**.0250 MHz	1**.030
1**.0333 MHz	1**.035
1**.0416 MHz	1**.040
1**.0500 MHz	1**.055
1**.0583 MHz	1**.060
1**.0666 MHz	1**.065
1**.0750 MHz	1**.080
1**.0833 MHz	1**.085
1**.0916 MHz	1**.090

Group:

Select the group where you want to register memory channels.

ALL:

Group including all the memory channels.

FLAG:

Group of memory channels you have set the item “Flag” when storing.

Group1 to Group8:

Group of memory channels you have set the groups “Group1” to “Group8” when storing.

Note: The names of Group1 to Group8 can be changed from “Memory Group Name”. See the “Memory Group Name” category (page 14).

Position (Lat): (FTA-750 Only)

This parameter sets the latitude of the entry with the selection of “**N** (north)” or “**S** (south)”.

Note: The format of this parameter reflects the setting on the **Location Format** item in the “**GPS Setup**” category.

Position (Lon): (FTA-750 Only)

This parameter sets the longitude of the entry with the selection of “**E** (east)” or “**W** (west)”.

Note: The format of this parameter reflects the setting on the **Location Format** item in the “**GPS Setup**” category.

MAIN SCREEN

SCAN Memory:

This parameter sets memory scan of the entry to “On” or “Off”.

RWY True Course: (FTA-750 Only)

This parameter allows you to set the RWY True Course for ILS navigation.

This allows you to display the ideal course of approach on the CDI of the radio when receiving the localizer signal of ILS on the entered channel.

This appears only when the FTA-750 is selected in the “Edit” menu of the YCE01.

Note: This parameter is programmable only on the YCE01.

Shift:

This parameter toggles the moving of a spurious response “On” or “Off” if the frequency of the entry is affected by the CPU clock of the radio.

Note: This parameter is programmable only on the YCE01.

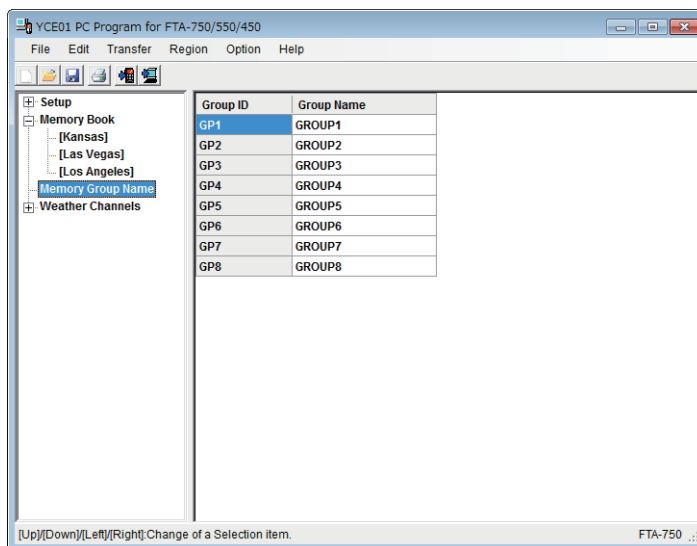
Deleting a Memory Book Entry

1. Click the “Memory Book” category to display the list of entries on the right pane.
2. Select the desired entry on the list.
3. Click the [DELETE] button at the bottom of the screen.
4. Click the [Yes] button on the dialog box appearing on the display.

“Memory Group Name” Category

You can change the group name of each group ID for “GP1” to “GP8”.

1. Click the “Memory Group Name” category.
The list of group IDs will be displayed on the right pane.
2. Click the group name you want to change, then enter the new group name.
The group name will be changed.



MAIN SCREEN

“Weather Channels” Category

Double-click the “**Weather Channels**” category to display the preprogrammed weather channels, then click the desired channel to display and edit its information.

WX CH:

This parameter indicates the provided memory number of the channel.

Frequency:

This parameter indicates the frequency of the channel.

Tag Name:

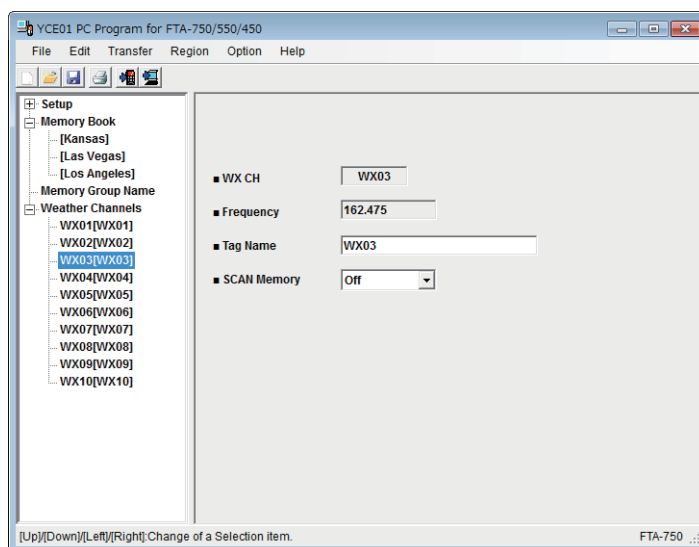
This parameter allows you to assign an alphanumeric name to the channel for easy identification and search.

Up to 15 characters are available.

Available characters are 0 to 9, A to Z, a to z, plus (+), hyphen (-), comma (,), slash (/), left bracket ([), right bracket (]), period (.), asterisk (*), ampersand (&), and space.

SCAN Memory:

This parameter sets memory scan of the channel to “**On**” or “**Off**”.



MAIN MENU

The **YCE01** has six menu categories, which are displayed on the menu bar of the **YCE01** window. This section describes the items unique to the **YCE01** under each menu.

“File”

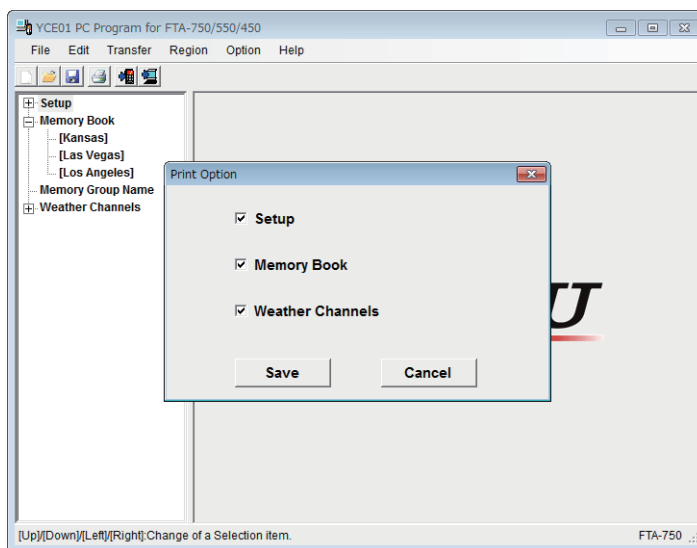
This menu performs the opening, saving, and printing of files with an extension “.dat”, which include the settings and channel memory of the radio.

“Print” ► “Print Option”

This sub-item allows you to select the categories in the “**System Tree View**” whose data are to be output for printing or saving as plain text.

Only the files selected in the Print Option dialog box “ON (☒)” will be output.

After you change the setting of the check boxes, click the [**Save**] button of the dialog box.



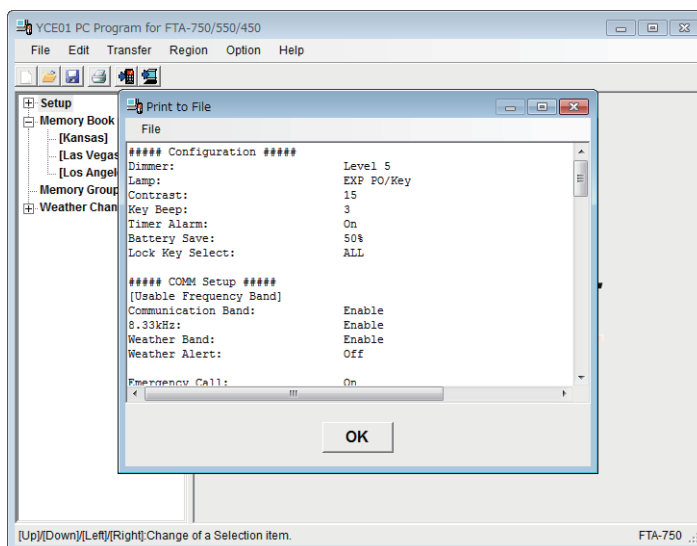
“Print to File”

This item allows you to save the settings you are opening and editing, in plain text.

A window showing the settings in the format to be saved will appear on the display.

To save it, click the “**File**” menu at the top left of the window, and select “**Save As...**”.

To cancel the saving, click the [**OK**] button at the bottom of the window.



MAIN MENU

“Edit”

“Model”


This item allows you to select the model of radio you are going to program the settings and channel memory (see Page 4).

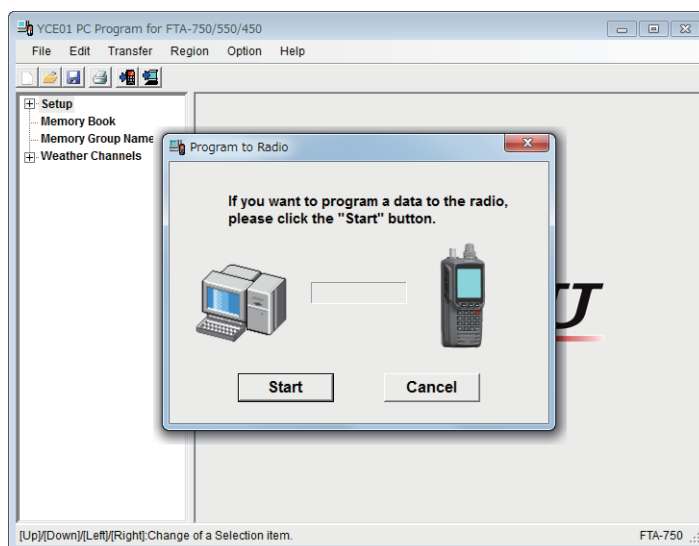
“Transfer”

This menu performs the downloading or uploading of information to/from a radio. To download/upload data to/from your radio, make a proper connection between the computer and your radio (see the next page) and turn on the radio before selecting the **“Transfer”** menu.

“Program to Radio”


The **“Program to Radio”** item downloads the data from the computer to the radio.

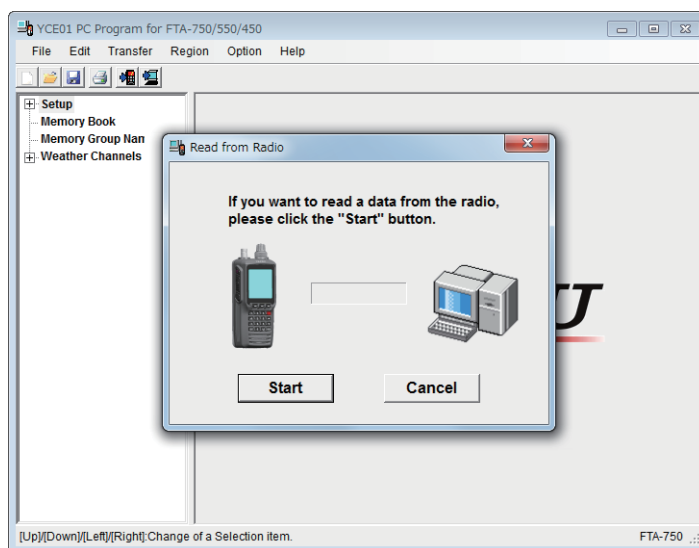
Select the **“Program to Radio”** (or click the  button) to open the pop-up window, then click the **[Start]** button to start downloading.



“Read from Radio”

The **“Read from Radio”** item uploads the stored data from the radio to the computer.

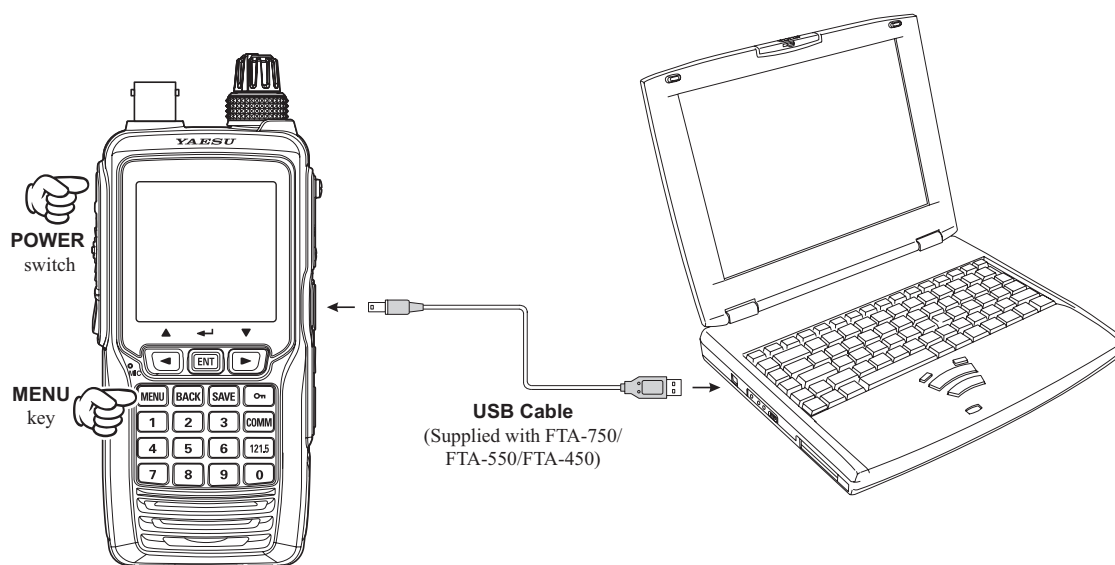
Select the **“Read from Radio”** (or click the  button) to open the pop-up window, then click the **[Start]** button to start uploading.



MAIN MENU

Programming Setup

1. Turn the transceiver off.
2. Connect the computer to the transceivers **DATA** jack using the USB Cable (**T9101606**) supplied with the FTA-750/FTA-550/FTA-450, as shown below.
3. Press and hold the **[MENU]** key while turning the transceiver on, to enter the programming mode.
The transceiver will beep and display the battery indicator only on the LCD.
4. Select the port from the list in the “**Port**” item under the “**Option**” menu of the YCE01.



MAIN MENU

“Region”

This menu allows you to initialize the settings of the programming data to those suitable for the specified region of the world (see Page 4).

“Option”

This menu allows you to set up the program according to your computer's configuration.

“Port”

This item selects the communication port used to connect the FTA-750/FTA-550/FTA-450.

If you connect multiple transceivers or other USB devices to your computer, all the active ports will be listed here. Select an appropriate port before resetting a transceiver, erasing or reading the GPS log data, or programming or reading the settings in a transceiver.



Copyright 2017
YAESU MUSEN CO., LTD.
All rights reserved.

No portion of this manual may be
reproduced without the permission of
YAESU MUSEN CO., LTD.

YAESU MUSEN CO., LTD.

Tennozu Parkside Building
2-5-8 Higashi-Shinagawa, Shinagawa-ku, Tokyo 140-0002 Japan

YAESU USA

6125 Phyllis Drive, Cypress, CA 90630, U.S.A.

YAESU UK

Unit 12, Sun Valley Business Park, Winnall Close
Winchester, Hampshire, SO23 0LB, U.K.